



nebosh

NEBOSH Certificate Digital Assessments: Technical Learner Guide

NEBOSH Certificate Digital Assessments: Technical Learner Guide

Contents

Introduction	02
Your assessment journey	03
Before the assessment	04
Technology requirements	04
Internet connection	04
Access to a device capable of downloading and viewing a PDF document	04
Registering for your Certificate Digital Assessment	05
Reasonable adjustments and access arrangements	05
Email one: Assessment Registration Confirmation	05
Email two: login details	05
Access problems	05
Still need help?	05
Using the online assessment platform	06
How to log in	06
Resetting your password	06
Privacy Statement	07
Accessing the tour guide	07
How to change the font and background colour	07
How to use the online assessment platform in another language	07
On the day of the assessment	08
Downloading your digital assessment question paper and materials	08
Downloading your assessment and answer template	08
Answer template	08
Submitting your digital assessment answer paper	09
Accepted formats	09
Naming your documents	09
Anti-plagiarism software	10
Statement of own work	11
Confirmation your submission has been received	11
Editing/deleting submission	11
Difficulties in uploading your submission?	11
After the assessment	12
Special Considerations	12
Closing interview	12
Results	12

NEBOSH Certificate Digital Assessments:

Technical Learner Guide

Introduction

We have created two guidance documents to help learners prepare for Certificate Digital Assessment:

- NEBOSH Certificate Digital Assessments: Learner Guide
- NEBOSH Certificate Digital Assessments: Technical Learner Guide

This document – the Technical Learner Guide – focuses on accessing, completing and submitting your Certificate Digital Assessment using NEBOSH's online assessment platform.

We recommend that you download and read all relevant documents as part of your Certificate Digital Assessment preparations.

Please note: The NEBOSH online assessment platform should only be used for submitting your answers to a digital assessment. If you are registered to complete other unit(s) please contact your Learning Partner for further details.

Read

The **NEBOSH Certificate Digital Assessments: Learner Guide** explains the structure of the Certificate Digital Assessment and associated closing interview and gives hints and tips to help you succeed.

What is a Learning Partner?

A Learning Partner is the organisation that provides your training course and registers you for your assessment.

NEBOSH Certificate Digital Assessments:

Technical Learner Guide

Your assessment journey



Registration

Learning Partners administer learner registration. It is important that you provide your Learning Partner with an accurate email address.



Confirmation of registration

You will receive an email confirming that you have been registered to a NEBOSH Certificate digital assessment.



Revise and prepare for your assessment

A range of **resources** is provided on the NEBOSH website.



Explore the NEBOSH online assessment platform

Eight days before your assessment, a unique username (your username is also your NEBOSH learner number) and temporary password will be sent to the email address you provided. Log in, create a new password and familiarise yourself with the platform. If you have previously taken an assessment using the NEBOSH online assessment platform your login details will remain the same and you will not receive this email.



Assessment day

The NEBOSH Certificate digital assessment will be available at the assessment start time (UK local time), which is documented in the email confirming your registration to the assessment. Complete and submit the assessment in the timeframe provided.



Closing interviews

Attend a closing interview with your Learning Partner.



Results

Results will be emailed to you up to 50 days after the assessment submission closing period. Your expected results notification date is provided in the email confirming your registration to the assessment, your Assessment Registration Confirmation (ARC).

Further details on our [marking and results process](#) is available on our website.

NEBOSH Certificate Digital Assessments:

Technical Learner Guide

Before the assessment

Technology requirements

The Certificate Digital Assessment is an assessment that needs to be downloaded, completed and submitted on the NEBOSH online assessment platform within a specified time period. You can complete your assessment at home so long as you have:

[Access to a device capable of downloading and viewing a PDF document](#)

This can be a computer, smartphone or tablet. If you plan to use a smartphone or tablet, the online assessment platform is fully optimised and responsive for mobile use.

Internet connection

The NEBOSH online assessment platform is compatible with the following browsers:

Desktop	Mobile
Chrome Firefox Safari Edge Internet Explorer	Mobile Safari Google Chrome

For the best experience and optimum security, we recommend that you keep your browser up-to-date.

NEBOSH Certificate Digital Assessments:

Technical Learner Guide

Registering for your Certificate Digital Assessment

To sit an Certificate Digital Assessment, you must register with your Learning Partner for a specific sitting.

At the time of your registration you must confirm your personal email address. Please make sure you use a personal email address and not a work/company email, as company firewalls can block messages which will result in you not receiving important information. NEBOSH uses the email address registered to your learner record for all communications including to send you your login and registration details.

Reasonable adjustments and access arrangements

The NEBOSH [Access Arrangements and Reasonable Adjustments Policy](#).

If you need to apply for a reasonable adjustment or access arrangement for the Certificate Digital Assessment, please request this through your Learning Partner.

Please note: If you have been granted a revised question paper, for example, a different coloured background, you will receive a modified PDF within the NEBOSH online assessment platform.

Email one: Assessment Registration Confirmation

Prior to assessment day you will receive an email confirming your registration.

Email two: login details

After you have registered with your Learning Partner, you will receive a login email no later than eight days before the assessment date – this will provide you with the login details you need to access the online assessment platform. Please check your email inbox for this email. The email will contain your username (also your learner number) and a temporary password.

When you first log in you will be prompted to change the temporary password. Please keep your username and password details safe ready for your assessment day.

Please note: if you have previously taken a NEBOSH Digital Assessment then you will use your existing login details and will not receive this email. If you have forgotten your details, please see 'Resetting your password' on the next page.

You will be able to access the NEBOSH online assessment platform, familiarise yourself with the layout and undertake the user tour.

If you have not received this initial login email 7 days before your assessment date, please [contact us](#)

Please note: You will only be able to access your question paper during the time period specified for your Certificate Digital Assessment.

Tip

We recommend that you log in, change your password and familiarise yourself with the platform before the day of the assessment. This will give you more time to focus on your assessment.

Access problems

If you have difficulty accessing the NEBOSH online assessment platform, please perform the following checks before contacting our Customer Enquiry team:

- Check your Internet connection
- Check you are using the correct login (this is case sensitive)
- Try using another browser from the list of compatible browsers in the table supplied on the previous page.

Still need help?

If you are unable to access your question paper or are having issues with your assessment, please contact our team using the details below and we will be happy to help you.

- [Contact us](#) by email
- 'Live chat' via our website www.nebosh.org.uk
- Telephone +44 (0)116 2634700

NEBOSH Certificate Digital Assessments:

Technical Learner Guide

Using the online assessment platform

Once you have completed the registration process and received your login details, you will be able to access the NEBOSH online assessment platform.

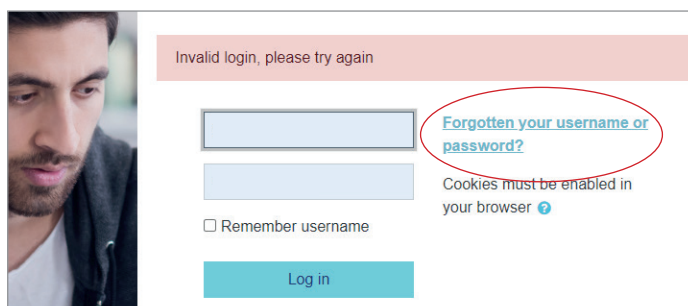
How to log in

Use your username or registered email and the new password you created to log into the NEBOSH online assessment platform at <https://learning.nebosh.org.uk>.

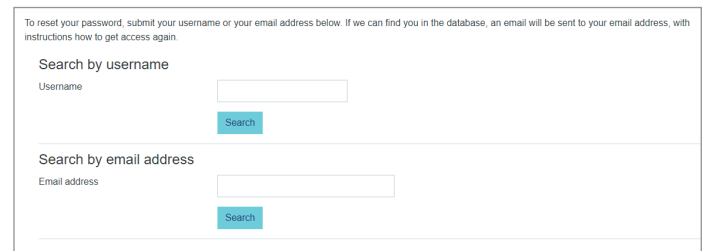


Resetting your password

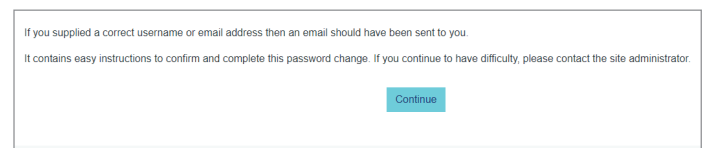
If you are unable to log in or are having issues with your password, click on the *Forgotten your username or password?* link.



You can either search by your username or email address registered. **Remember:** your username can be found in the login details email that was sent to you and is the same as your learner number.



This will then send a password reset link to your registered email address.



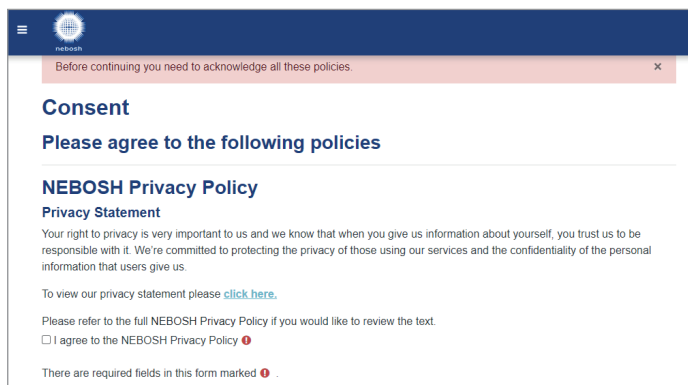
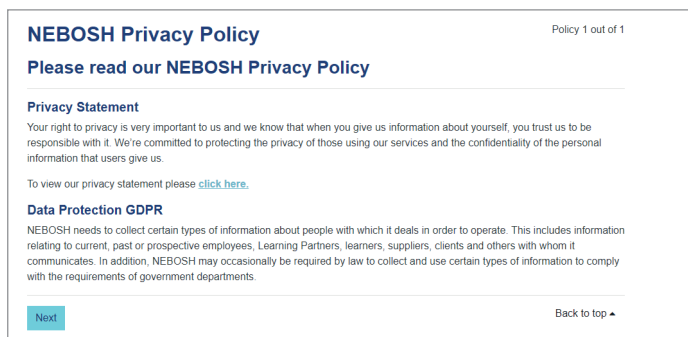
If you have not received your reset password email, please check your junk folder and allow at least ten minutes for the email to come through. If you still have not received it please **contact NEBOSH**.

If you have previously taken a NEBOSH Certificate Digital Assessment your login details will remain the same. If you have forgotten your password select 'Forgotten your username or password?'. Your username is your learner number.

NEBOSH Certificate Digital Assessments: Technical Learner Guide

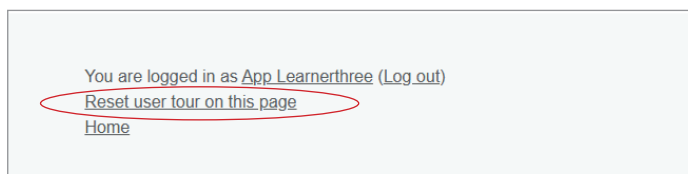
Privacy Statement

The first time you log into the NEBOSH online assessment platform an automated privacy statement will appear on the screen. Please read this carefully. By ticking the boxes and clicking 'next' you are agreeing to the terms.



Accessing the tour guide

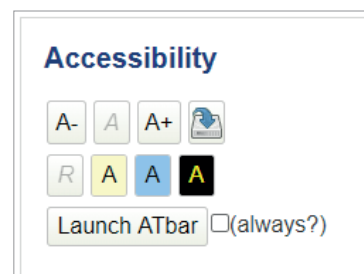
When you access the platform for the first time, a tour is available to highlight its key features. To revisit this tour at any time, scroll down to the bottom of any of the pages and select the *Reset user tour* on this page link.



How to change the font and background colour

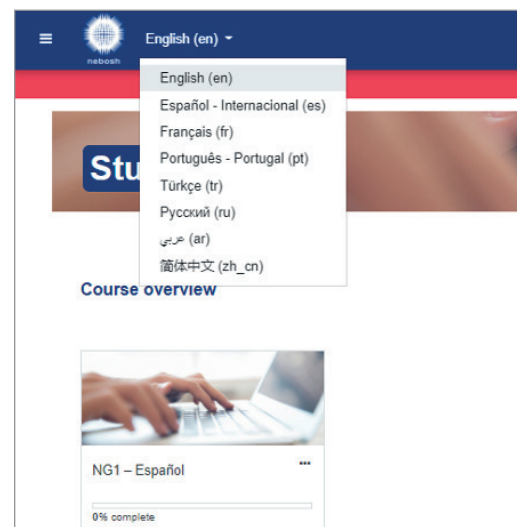
It is possible to change the font size and background colour you see in the NEBOSH online assessment platform.

Click on the Accessibility box on the right-hand side of the homepage to select from the available options.



How to use the online assessment platform in another language

Click on the button and arrow next to the NEBOSH logo in the top left hand corner of your screen. You will be presented with a list of language options - select your chosen language.



NEBOSH Certificate Digital Assessments: Technical Learner Guide

On the day of the assessment

The NEBOSH Certificate Digital Assessments: Learner Guide provides you with useful pointers to help you prepare for and complete your Certificate Digital Assessment, including guidance on:

- How to revise and prepare your notes
- Creating a workspace conducive to success
- The assessment format and how to answer questions well
- Word counts
- How to reference materials used during your Certificate Digital Assessment
- NEBOSH's policy on malpractice, plagiarism and collusion

Read

[NEBOSH Certificate Digital Assessments: Learner Guide](#)

Please remember the deadline will be UK local time so if you are completing the assessment outside of the UK you will need to make sure you consider any time zone differences. Please refer to a [world clock](#).

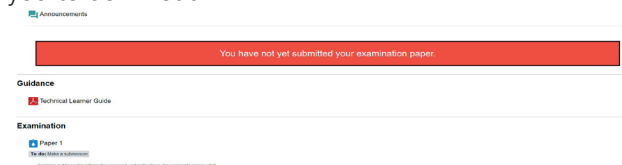
Downloading your digital assessment question paper and materials

Downloading your assessment and answer template

When you login on the day of your assessment you will see the unit assessments you have been registered for.

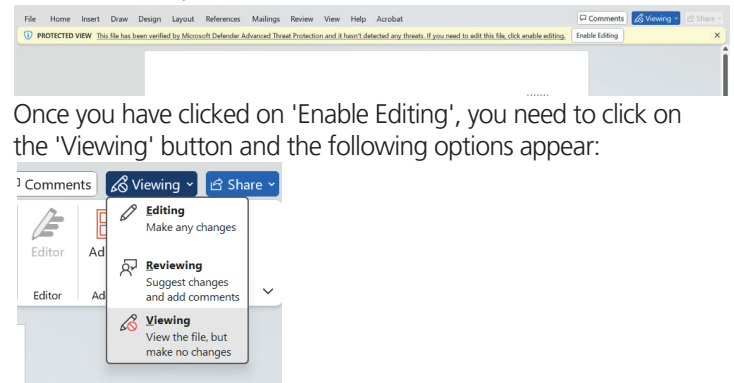


During the assessment time, once you click onto the required unit, you will see an assessment file available for you to download.



Within this assessment file, you will find the question paper, an answer template and any applicable supporting material for your assessment.

To enable edit option in Moodle:



You must select 'Editing' to be able to type in the document.

Once you have downloaded these documents, you have everything you need to sit your assessment.

Answer template

It is not compulsory to use the answer template provided for all assessments, however it is recommended.

If it is compulsory to use the answer template provided, it will be clearly displayed on your assessment paperwork, for example, the question paper.

The first section of the answer template will need to be completed with your:

- Name
- NEBOSH learner number (your username)
- Learning Partner details

Please note: if you use the answer template, it is important that this is downloaded and used to complete your work offline. If you remain logged into the platform while completing the assessment, you will be timed out and may lose your work. Save the answer template to your computer and remember to keep saving the document.

If you decide not to use the answer template, you will need to include the same information on your submission, including:

- Unit code (e.g. NG1)
- Assessment date
- Your name
- Your NEBOSH learner number (your username)
- Learning Partner name
- Page numbering and question numbers next to each of your responses. You do not need to copy out the questions
- Word count (this does not include the references)
- A list of references you have used

NEBOSH Certificate Digital Assessments:

Technical Learner Guide

What is a Learning Partner?

A Learning Partner is the organisation that provides your training course and registers you for your assessment.

Top tip: Remember to save your work regularly while completing your answers.

Submitting your digital assessment answer paper

Accepted formats

Your answers should be prepared electronically. You can submit them via the NEBOSH online assessment platform in PDF format. No other file formats are permitted.

You may not submit handwritten answers.

Please note: the file size limit is **100MB in total**. The system cannot accept anything that exceeds this. As per the guidance, you should only upload one file per digital assessment.

Naming your document

It is important that you name your answer paper document(s) correctly to allow NEBOSH to identify your documents. Please name your submission using the following information:

- Surname
- First name
- NEBOSH learner number – your learner number can be found on the initial log in details email and is also your username
- Learning Partner name

For example:

Smith John 00123456 NEBOSH Learning Partner

Important

Do not delete the file extension when renaming your documents. You must keep .pdf, after the name of your document(s).

It is strongly recommended that you do not leave it until the deadline to upload your answer paper as delays may be experienced due to the high volume of learners accessing the platform.

- Click on the 'Add submission' button at the bottom of your assessment page.

Submission status

Submission status	No attempt
Grading status	Not marked
Due date	Saturday, 4 July 2020, 12:00 PM
Time remaining	23 hours 38 mins
Last modified	-
Submission comments	Comments (0)

[Add submission](#)

- You will be asked to agree to the Turnitin End-Users License Agreement, by clicking the link the agreement will be launched.

Examination Paper

Contains public sector information licensed under the Open Government Licence v3.0

Contiene información del sector público con licencia de Licencia de Gobierno Abierto v3.0

Contient des informations du secteur public sous licence ouverte du gouvernement v3.0

Contém informações do setor público licenciadas sob a Open Government License v3.0

Açık Hükümet Lisansı v3.0 kapsamında lisanslı kamu sektörü bilgilerini içerir

Содержит информацию, размещенную государственными органами на условиях Open Government License v3.0

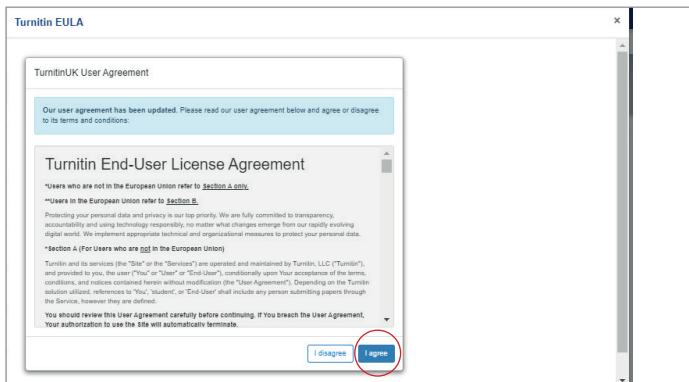
يحتوي على معلومات القطاع العام المرخص لها بموجب ترخيص الحكومة المفتوحة v3.0

[Blank doc.docx](#) 20 November 2020, 2:16 PM

[To submit a file to Turnitin you must first accept our EULA. Choosing to not accept our EULA will submit your file to Moodle only. Click here to accept.](#)

NEBOSH Certificate Digital Assessments: Technical Learner Guide

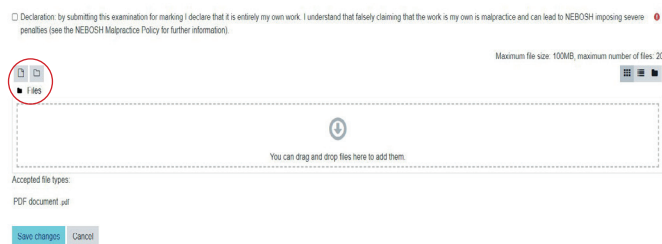
- You will need to agree to the this before submitting your work by clicking 'I agree'



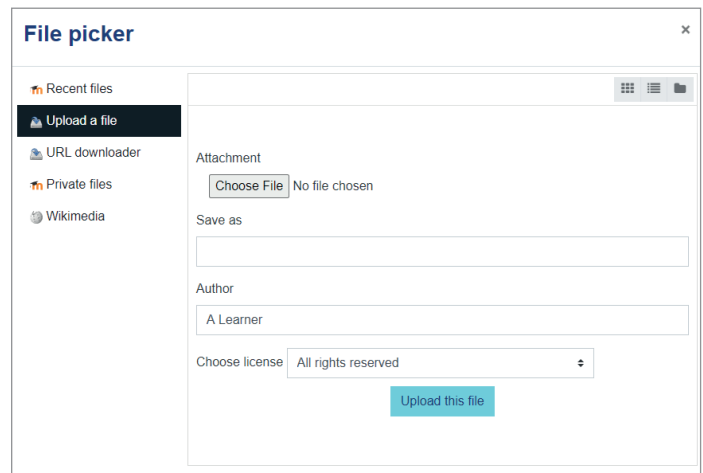
Anti-plagiarism software

Assessments must be the learner's original work. Assessments will be submitted by NEBOSH to the Turnitin UK text-matching service and added to the Turnitin database. Cases of plagiarism or collusion will be dealt with severely and are liable to result in the submission being disqualified and the learner being banned from future registrations. Any learner who provides an opportunity for another learner to use his/her assessment inappropriately shall be liable to the same sanction.

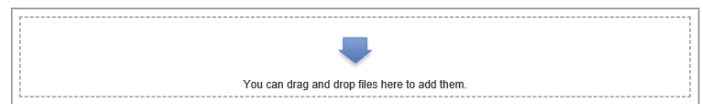
- Once this has been selected, you can then choose the file to upload by clicking the below "file" icon.



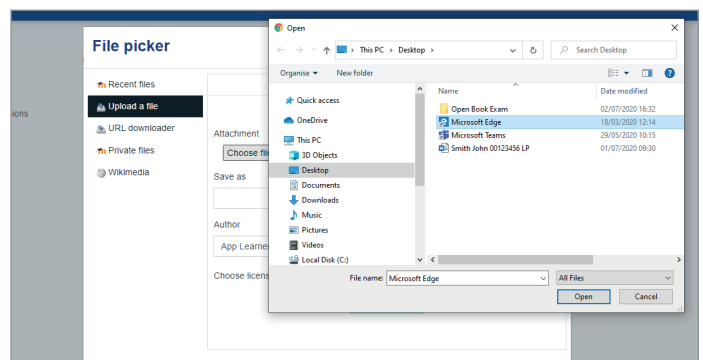
- Once you have clicked on the file icon the below box will appear for you to browse your computer and select your file.



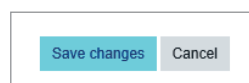
- Alternatively, you can use the drag and drop option into the blue arrow section below.



- Once you have selected your file you can upload it.



- Finally, click the 'save changes' button at the bottom of the page, to confirm upload.



NEBOSH Certificate Digital Assessments:

Technical Learner Guide

Statement of own work

When you submit your answer paper, you will be asked to confirm that the work is your own. Further information can be found in the [NEBOSH Malpractice Policy](#).

Please note: You cannot submit your assessment answer paper unless you have ticked this box.

☒ Declaration: by submitting this examination for marking I declare that it is entirely my own work. I understand that falsely claiming that the work is my own is malpractice and can lead to NEBOSH imposing severe penalties (see the NEBOSH Malpractice Policy for further information).

Confirmation your submission has been received

Once you have submitted your assessment answer paper, the NEBOSH online assessment platform screen will display a confirmation in green, as shown in the screenshot below.

Assignment submission
Opened: Friday, 14 April 2023, 12:00 PM
Due: Saturday, 1 July 2023, 12:00 PM
[Download Marked Submission](#)

Submission status

Submission status	You have successfully submitted your examination paper.
Grading status	Not marked
Time remaining	9 days 21 hours
Last modified	Wednesday, 21 June 2023, 2:20 PM
File submissions	File: Date Submission-Learner Number-Learner Name.pdf 21 June 2023, 2:20 PM

Editing/deleting submission

You can edit or delete and replace a submission at any time during the assessment period.

- Click on your uploaded assessment file.

Files

Assignment

Accepted file types:
PDF document .pdf

Save changes Cancel

- An option box will appear, you can either select 'delete' at the top or 'update' in blue.

Edit Surname Forename
00123456 NEBOSH Learning Partner....

Download Delete

Name Surname Forename 001234

Author A Learner

Choose license All rights reserved

Path /

Update Cancel

Last modified: 6 October 2020, 3:58 PM
Created: 6 October 2020, 3:58 PM
Size: 26.7KB

- If removing your submission to add an updated version, a confirmation box will appear to confirm you wish to delete the document.

Are you sure you want to delete this file?

OK Cancel

- Once this has been removed, follow the steps above to submit your updated answer paper.

Please note: If you delete a file after submitting, the green confirmation of submission message will remain displayed on the screen. Please make sure you are submitting your answers rather than the question paper or other associated documents.

Difficulties uploading your submission?

If you experience any difficulties uploading your answer paper please contact your Learning Partner in the first instance.

If you are unable to speak to your Learning Partner, the NEBOSH Customer Enquiry team are here to help.

- [Contact us](#)
- 'Live chat' via our website www.nebosh.org.uk
- Telephone +44 (0)116 2634700

Please note: Failure to report any issues to NEBOSH could result in your submission not being accepted.

NEBOSH Certificate Digital Assessments:

Technical Learner Guide

After the assessment

Special considerations

If you think that your performance in your assessment has been negatively affected by temporary illness, bereavement, injury, or adverse circumstances that arose at or near the time of assessment you can apply for special consideration.

Please refer to the [NEBOSH Special Considerations Policy](#).

Please contact your Learning Partner if you think special consideration should be applied. They will complete an application on your behalf where appropriate.

Closing interview

Once you have submitted your answer paper you must attend a closing interview with your Learning Partner.

The purpose of the closing interview is to confirm that the work you have submitted is your own and that you did not have assistance in completing your assessment. The Interviewer will ask you questions about your assessment submission.

Though the closing interview is not an assessment, it must take place before your results can be declared.

Results

Results will be issued up to 50 working days from the assessment date and sent to the email address registered to your learner record.

It is recommended that you keep a copy of your original submission until your results are declared should there be any technical difficulties in the download of your answer paper.

Read

Further information to help you prepare for your closing interview is available in the [NEBOSH Certificate Digital Assessments: Learner Guide](#).

Follow us:

-  www.linkedin.com/company/nebosh
-  www.facebook.com/neboshofficial
-  [@NEBOSHTweets](https://twitter.com/NEBOSHTweets)
-  www.youtube.com/neboshofficial

NEBOSH

5 Dominus Way
Meridian Business Park
Leicester LE19 1QW
United Kingdom

Contact us

www.nebosh.org.uk

NEBOSH, the National Examination Board in Occupational Safety and Health,
is a world leading provider of health, safety, environmental and wellbeing qualifications.

Registered in England and Wales | Company number: 2698100 | Registered charity number: 1010444

© Copyright NEBOSH 2020